



Queen Mary

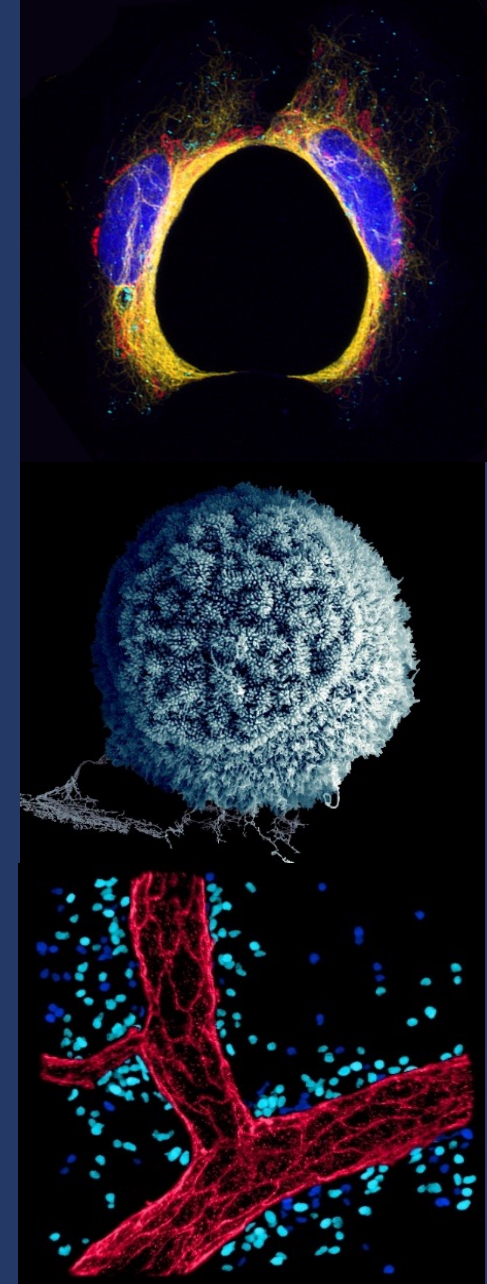
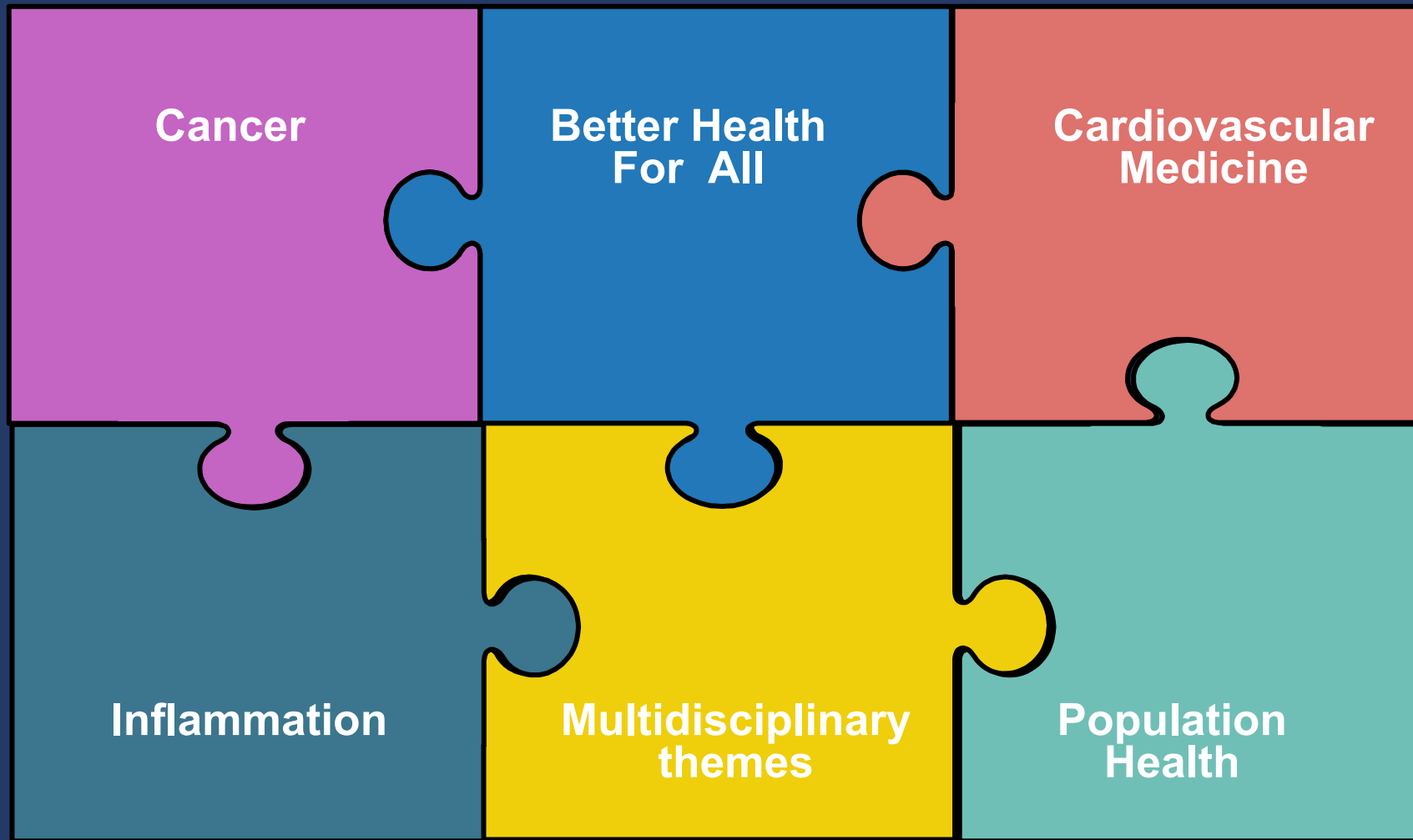
University of London

Faculty of Medicine and Dentistry



**Athena Swan Silver
in both Medicine
and Dentistry**

Research Themes



Multi-disciplinary Themes in Research

To deliver our 2021-2026 strategy, we have identified MDTs based on our excellence but also to nurture cross-Faculty initiatives as well as forge external partnerships. The weight of the health problems we intend to address require multi-disciplinary approaches and research. We will progress with the formation of consortia and partnerships to ensure that the Faculty's research is of benefit to communities nationally and internationally.

- Digital Health
- Crisis Prevention, Management, and Recovery (CPMR)
- Environment and Health
- Lifelong Health

Our Institutes

Barts Cancer Institute

Blizard Institute

Institute of Dentistry

Institute of Health Sciences Education

William Harvey Research Institute

Wolfson Institute of Population Health



Whitechapel



Charterhouse Square

Blizard Institute

Biological Sciences, Biomedical Sciences, Cell Biology

Colorectal Cancer Genetics, Cutaneous Medicine,

Diabetes & Metabolic Medicine

Digestive Diseases, Epithelial Biology, General Practice & Primary Care

Genetics, Immunobiology, Immunology & Infectious Diseases, Molecular Biology

Neurogastroenterology, Neuroscience & Trauma, Paediatrics, Pathology

Peri-Operative Immunology, Primary Care & Public Health

Respiratory & Environmental Medicine, Trauma Sciences

William Harvey Research Institute

Biochemical Pharmacology, Bone & Joint Research, Cardiology

Cardiovascular Medicine, Cardiovascular Pathophysiology

Cardiovascular Pharmacology, Clinical Pharmacology

Endocrinology, Experimental Medicine & Rheumatology

Intensive Care Medicine, Microvascular Research

Primary Care & Medical Education, Renal Medicine

Sports & Exercise Medicine, Cell Biology

Genetics, Molecular biology, Cardiovascular Imaging

Institute of Dentistry

Biomedical Materials Clinical & Diagnostic Oral Sciences

Clinical Oral Immunology, Dental Biomaterials

Dental Physical Sciences, Dental Public Health

Experimental Medicine & Oral Pathology

Microbiology/Biomaterials, Molecular Pathology

Oral Growth & Development, Oral Oncology

Oral Pathology, Prosthodontics/Dental Materials

Barts Cancer Institute

Cancer & Inflammation, Experimental Cancer Medicine

Haemato Oncology, Molecular Oncology,

Stems Cells in Cancer & Aging

Tumour Biochemistry, Tumour Biology

Institute of Health Sciences Education

Health Sciences

Medical Education

Wolfson Institute of Population Health

Biostatistics, Cancer Prevention, Clinical Epidemiology, Cultural Psychiatry,

Environmental & Preventive Medicine, Epidemiology, Medical Statistics,

Psychiatric Epidemiology, Psychiatry Social Psychiatry, Psychology

Developing the next generation of researchers

- ~580 Registered PhD students
- PhD Thesis submissions rates above 84% for the last five years
- A national survey (PRES) rates SMD highly amongst Russell Group Universities for PhD research culture



Non-Clinical Doctoral Training Partnerships

- **BHF: Cardiac & Vascular Medicine - 4-year MRes/PhD programme,**
- **MRC: Translational Biosciences (with University of Southampton) - 4-year MRes/PhD programme**
- **Wellcome Trust: Health Data in Practice – Human Centred Science, 4-year MRes/PhD programme.**
- **BBSRC LIDO (led by UCL) range of projects across QM SMD**

Clinical Doctoral Training Partnerships

- **Wellcome Trust: Health Advanced in Underrepresented Populations (HARP)**
- **Wellcome Trust: Primary Care for Clinicians**
- **Wellcome Trust: Global Health Research in Africa**

Commercial Training Partnerships

- **Exscientia, Heptares, Merck / BBSRC (QM Wide: S&E + SMD)
- Drug Discovery / AI**

Self-Funded PhDs

Postgraduate Research Opportunities at the Faculty of Medicine and Dentistry:

To deliver our research strategy of '[Better Health for All](#)' and our aspiration to train the research leaders of the future, the Faculty of Medicine and Dentistry has opened opportunities for self-funded PhD students in multiple areas of biomedical and translational research across our six internationally recognised Research Institutes.

From the laboratory bench to experimental medicine to public health cutting-edge research, we are at the forefront of innovation in medical research, addressing some of the world's greatest health challenges. If you are enthusiastic to learn and train in world class research and join one of our world-leading research teams for your PhD, we will identify a suitable supervisory team and project that satisfy your interests. For further information, please contact fmd-pgr@qmul.ac.uk and [visit the Faculty of Medicine and Dentistry webpage](#).